

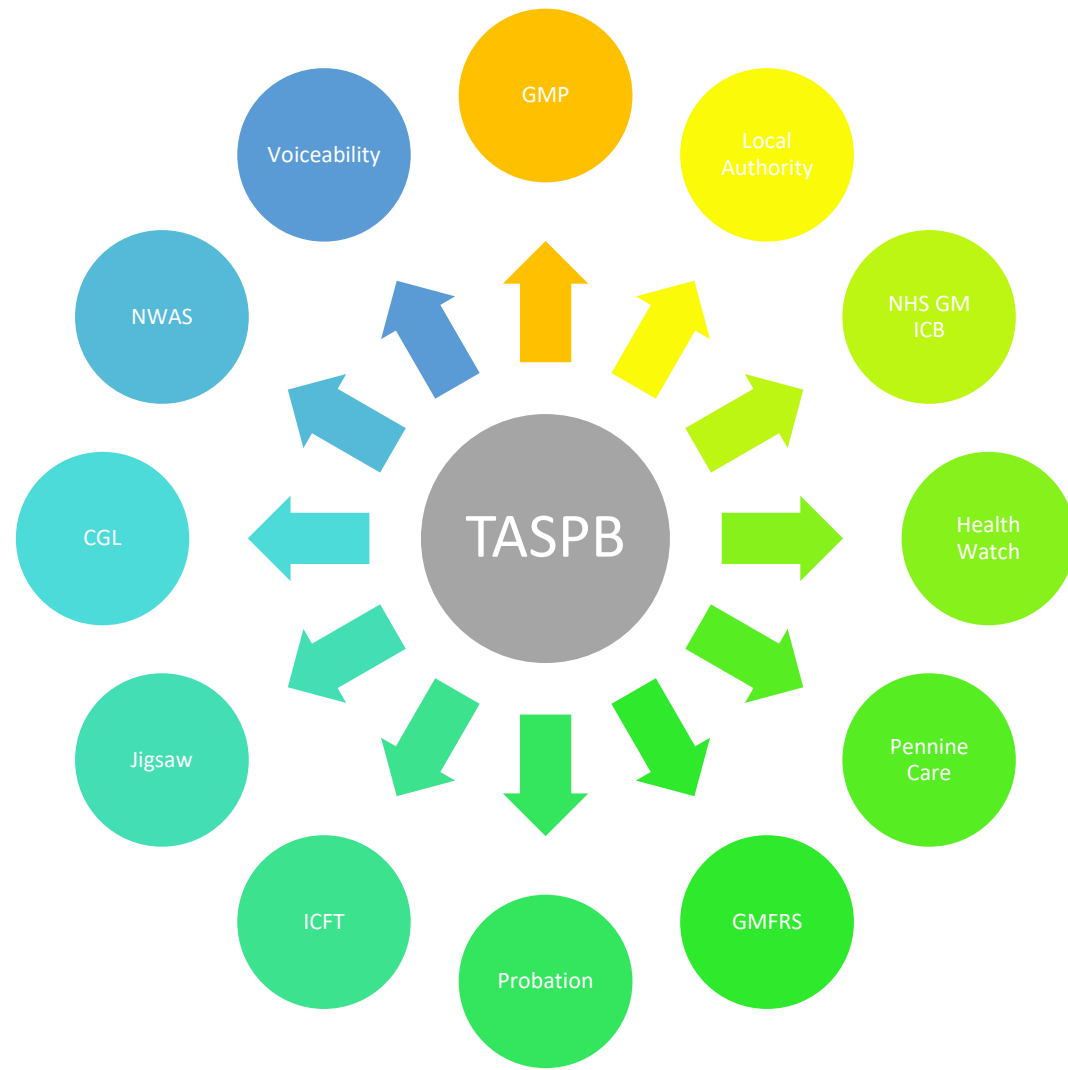
# TASPB Annual Report

Jane Timson – Independent Chair TASPB

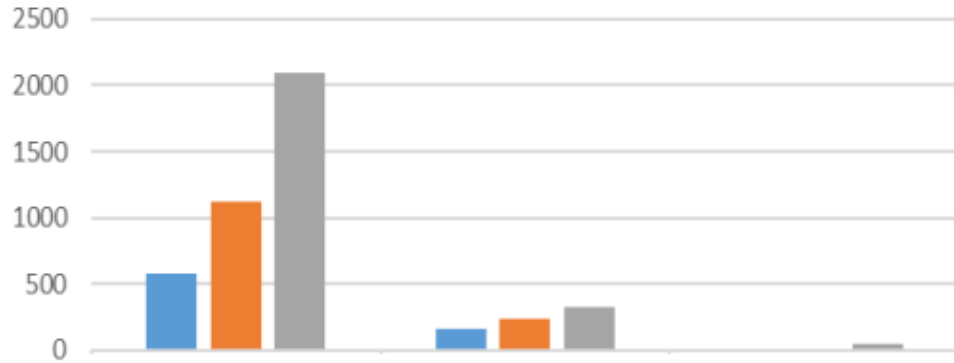
Anna Jenkins – Head of Safeguarding, Quality and Practice

# TASPB Strategy Priorities 2022-25

- Self Neglect
- Multiple disadvantage
- Neglect
- Domestic Abuse



## Total Number of Safeguarding Concerns



- Number of concerns has increased bringing us inline with regional averages.
- Due to changes in Safeguarding Policy and Procedure changes in Feb 2022.
- Results also reflect national trends following a drop in referrals during the pandemic.
- Conversion rate is low work taking place to explore this.

	Total number of Safeguarding concerns	Total Number of Section 42 Safeguarding Enquiries	Total Number of Other Safeguarding Enquiries
2021	581	156	0
2022	1116	232	0
2023	2089	331	51

# Safeguarding Adult Reviews 2022/23

3 SARS were published during 22/23.

Gaynor

Erik

Demetria

Multiagency approach to Risk

Team Around the Adult Policy

Review Information Sharing Arrangements

Consider 'Think Family' and 'Professional Curiosity'

# Raising Awareness

- 15<sup>th</sup> June World Elder Abuse Awareness Day – Focus on cascading information on supporting older adults at risk of abuse and neglect and support carers.
- 21<sup>st</sup> November - 26<sup>th</sup> November National Adult Safeguarding Week – Online Conference for professionals re: Domestic Abuse
- TASPb Newsletter circulated to all Partner Organisations, promotes the work of TASPb

<b>Organisations attending training 22/23</b>	<b>Number of Attendees</b>
Active Tameside	4
Advocacy Services	3
Adults Social Care	11
Integrated Care Organisation	2
Change Grow Live	1
ICFT	12
Independent Commissioned Care Agencies	68
Jigsaw Housing	6
Pennine Care NHS Foundation Trust	27
GMP	1
St Peters Partnership	8
Tameside Education and Arts	2

# Achievements 2022/23

- Ongoing development and embedding of new policy and procedures.
- Joint Learning Sessions between ASC, Jigsaw and CGL to share knowledge and learning in relation to multiple disadvantage and Hoarding
- Tiered Risk Assessment Model Developed with support of Oldham SAB.
- Improved pathways for accessing GMP support in Safeguarding Enquiries.
- Training for multiagency partners.



# Plans for 2023/24

- Redesign of TASPb Team
- Implement Tiered risk Assessment Model – embed Team Around the Adult.
- Review the Self Neglect Strategy and Tool Kit
- Develop a new approach to hoarding.
- Review arrangements in place for data sharing and financial sustainability.
- Recruit a new Independent Chair of the Board.
- Develop Integrated Dashboard
- Review the Public Website